



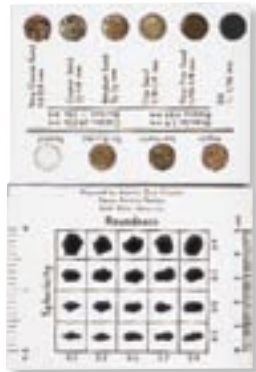
## The Globe Soil Color Book

3890

### Meets The GLOBE Program Specifications

This water-resistant soil book features a unique "waterfall" page design with each of the 208 extra-large color samples stripe-coated across the page for easy comparison to soil samples, while also preserving the three-dimensional color order throughout the book. Features 8 hues (7.5R - 5Y), 23 Gley colors, a soil structure ruler, and diagrams and instructions for determining soil color, structure, texture, consistence, and free carbonates. Constructed of water-resistant, non-paper stock. Chart may be exposed to moisture and cleaned after use without damage. **Page sizes vary according to "waterfall" effect:** 2", 2-1/4", 2-1/2", 2-3/4". **Color stripe size:** approximate 11/16" wide.

The Globe Soil Color Book 6 oz. **77369**



## Sand Grain Sizing Folder

3077

Pocket-sized folder enables the field geologist to quickly and accurately identify grain size and shape, grain sorting, roundness, and sphericity of a sample. Consists of sphericity/roundness measuring chart; printed examples of well-sorted and poorly-sorted grain samples in fine, medium, and coarse ranges; four actual grain samples illustrating angular, subangular, subrounded, and rounded shapes; **six grain size samples:** silt, very fine sand, fine sand, medium sand, coarse sand, and very coarse sand. Measurement limits for granules, pebbles, cobbles, and boulders indicated.

Sand Grain Sizing Folder  
2 oz. **77332**  
10+

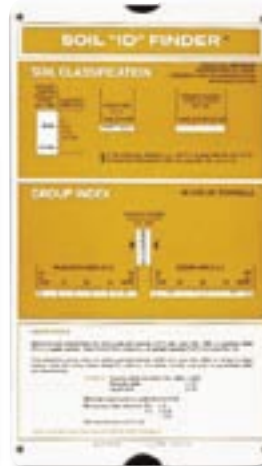


## Sand Gauge

3080

Flexible, waterproof plastic card has sand grains ranging from very coarse sand to fine silt permanently fused on plastic card. Additional features include size classification for large clasts, bed thickness classification, roundness chart with actual sand grains, field checklist for organizing notes, geologic time scale, and two carbonate classification charts. Gauge measures 2.5" x 3.5" and has nylon string for carrying convenience.

Sand Gauge  
3 oz. **77326**  
10+

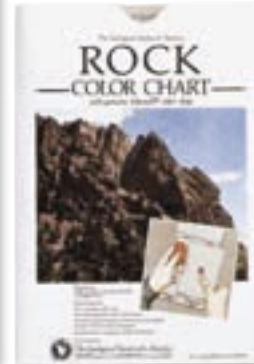


## Soil "ID" Finder

3075

Classifies soil in accordance with AASHTO Soil Classification system without the use of charts, tables, formulas, and mental process of elimination necessary to classify a soil material. One setting of the evaluator and you can read soil group classification. One additional setting and you easily determine corresponding group index value. **Note:** The AASHTO classification system divides soils into seven groups: A-1 to A-7, based on laboratory determination of particle-size distribution, liquid limit, and plasticity index. The soil group classification indicates the relative quality of material for use in earthwork structures such as foundations, embankments, subgrades, subbases, and bases.

Soil "ID" Finder  
3 oz. **77334**

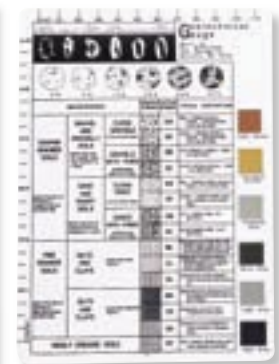


## Rock Color Chart

3081

Handy chart consists of 115 color chips for identifying the range of rock colors. Chart form and arrangement based on widely accepted Munsell® system. Color names based on ISCC-NBS Standards (Inter Society Color Council - National Bureau of Standards). Munsell numerical designation under each color name. Works with either wet or dry specimens. Excellent for describing color of medium to fine-grained rocks. Also helpful when working with coarse-grained rocks. Mask and instructions included.

Rock Color Chart  
4 oz. **77333**



## Geotechnical Gauge

3204

Make accurate and consistent observations every time! Features include centimeter and inches scale, roundness chart, chart for estimating percentage composition, 6 common Munsell® soil colors, Unified Soil Classification System (USCS), soil compaction tests for clay and sand, and size classification chart with actual sand grains from coarse to silt permanently fused to plastic card. Flexible, waterproof plastic card has nylon string for carrying convenience and measures 5" x 7".

Geotechnical Gauge  
2 oz. **77325**  
10+

## Munsell® Color Two-Volume Book of Color - Glossy Collection

2289

With 1,605 colors, this is the most useful color guide there is! Ideal for evidence collection, the hue, value and chroma scales in the Munsell Book of Color make it easy to evaluate and compare the color of virtually any material. And, because the chips are removable, you can quickly compare and coordinate colors with ease.

The two-volume set is arranged on 40 constant hue charts (2.5, 5, 7.5 and 10 positions of each hue) plus 4 Munsell Gray charts and 3 supplementary color charts containing accent colors. **Value Range:** 2/ to 9/ in whole steps, with 8.5/ added to Y charts. **Chroma Range:** /2 to maximum achievable in equal steps of 2. Also includes 37-step Neutral Value Scale. **Chart Size:** 9-3/4" x 11". **Chip Size:** 3/4" x 1-5/8".

Munsell® Book of Color 15.25 lbs. **77900**



## USDA Soil Texturing Field Flow Chart

2074

Use this single-sided, plastic-coated guide for assisting with soil texturing procedures and assigning a Texture Class using the USDA texture triangle. The Flow Chart uses step-wise procedures (adopted from Foth and others, 1992) for estimating sand, silt, and clay content, and it uses the ribbon method to estimate the fine-grained fraction followed by placing the fraction within the texture triangle to determine Texture Class (ex: sandy loam). The guide provides instruction for determining Subclass (ex: fine sandy loam) and assigning Textural Class Modifiers for rock fragments greater than 2mm (ex: gravelly silt loam) and organic Compositional Textural Modifiers (ex: peaty sandy clay loam). **Dimensions:** 8.5" x 11".

USDA Soil Texturing Field Flow Chart  
1 oz. **77352**



## Munsell® Color Soil Color Charts

3078

**Use to judge color of rocks, archaeological specimens, animal pelage, and many natural products in this color range.**

Munsell has revised the original soil color charts that were developed with the U.S. Soil Conservation Service for classifying the color of various soils. Washable new edition features handy tabs for flipping to needed charts without getting pages dirty. Approximately 322 color chips are permanently mounted on 9 charts for basic collection of 7 hues (10R-5Y) and 2 gley charts with apertures between chips to make comparisons easier. High Chroma colors are Glossy Finish. Can be used for evaluation of skin, hair and eye color in anthropology, criminology, pathology and forensic medicine. Loose leaf binder. Furnished with color-name diagrams, instructions, and masks. 1999 Revised Washable Edition. **Chart size:** 4-1/4" x 7-1/4". **Chip size:** 1/2" x 5/8".

Soil Color Charts –  
set of 9 charts, 2 gley and 7 hues.  
14 oz. **77341**  
5+

Supplemental 7.5R Chart for tropical  
and semi-tropical soils furnished  
with color-name diagram.  
1 oz. **77342**

Supplemental 5R Chart for Australia,  
Southeast Asia, etc. furnished  
with color-name diagram.  
2 oz. **77343**

Supplemental 10Y-5GY Chart for glauconite  
soils in the Northeastern U.S. (specifically  
Delaware, Maryland, and Virginia areas),  
the Mississippi Valley, and Wisconsin.  
1 oz. **77350**

Replacement Gley Chart for submerged soils  
and full grayscale. Weak chromas on value  
levels 2.5 to 8 for hues N, 10Y, 5GY, 10GY,  
5G, 10G, 5B-6, 5B, 10B and 5PB. Charts are  
now included in all Munsell color chart books.  
Total of two charts.  
2 oz. **77344**

Replacement Binder  
8 oz. **77298**

## Munsell® Color Plant Tissue Color Chart

1635

**Accurately determine and record color from nutrient deficiency in plant tissues.**

**Contains 320 matte color chips mounted on charts for 17 hues:** 2.5R, 5R, 10R, 2.5YR, 5YR, 7.5YR, 2.5Y, 5Y, 2.5GY, 5GY, 7.5GY, 2.5G, 5G, 7.5G, 5BG, 2.5B, and 5RP. Instructions, binder, and masks included. 1977 Edition.

Munsell Plant Tissue Color Chart  
14 oz. **77361**



## Field Guide for Soil and Stratigraphic Analysis

2073

**Makes analyzing and logging soil and stratigraphy in the field easy!**

The front side of this field guide consists of a flow chart which lists key descriptive elements used to characterize and differentiate soil and stratigraphic units on soil boring logs. Commonly used terms from geologic, engineering, and soil science disciplines are included. The back of the field guide includes a user-friendly flow chart for easy assignment of a group name and USCS (Unified Soil Classification System) symbol in the field. Plastic coated, 8-1/2" x 11" guide.

Field Guide for Soil  
and Stratigraphic Analysis  
1 oz. **77351**

### Replacement Charts

Size	Weight	10R	2.5YR	5YR	7.5YR	10YR	2.5Y	5Y	\$
4-1/4" x 7-1/4"	2 oz.	<b>77291</b>	<b>77292</b>	<b>77293</b>	<b>77294</b>	<b>77295</b>	<b>77296</b>	<b>77297</b>	